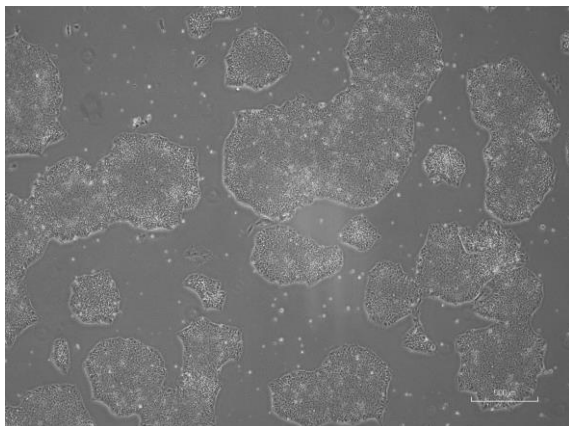
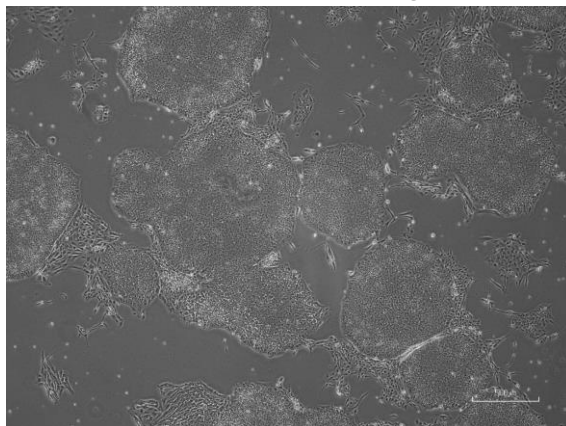


【 CiRA-j-1432 】 Morphology of iPSC colonies

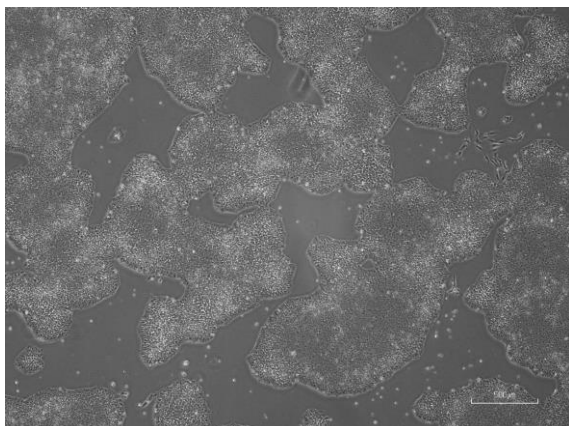
CiRA-j-1432-A: passage-3



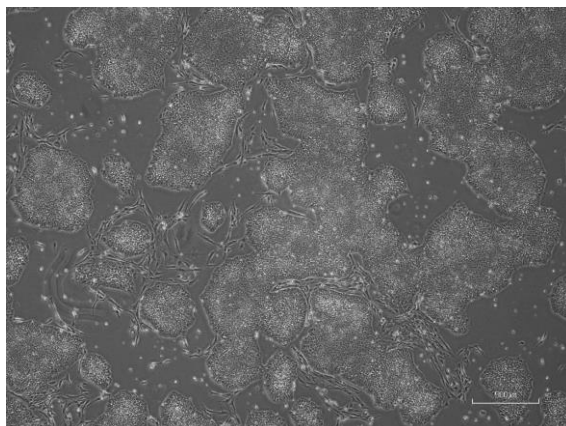
CiRA-j-1432-B: passage-3



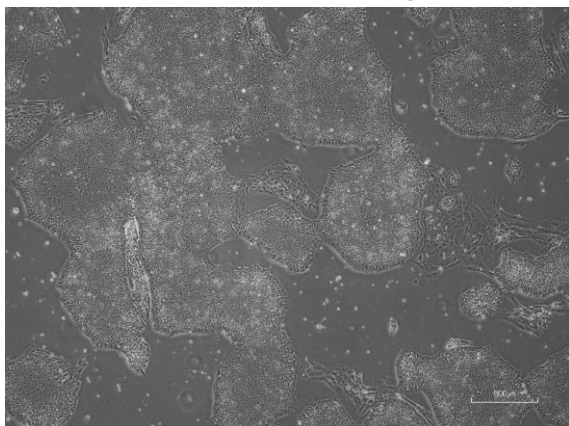
CiRA-j-1432-C: passage-4



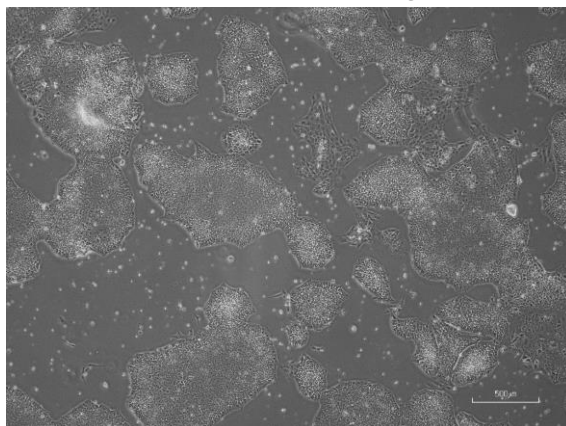
CiRA-j-1432-D: passage-4



CiRA-j-1432-E: passage-5



CiRA-j-1432-F: passage-5



(All images were captured at 4x magnification)